

TERRAFORM QUICK REFERENCE GUIDE

SWITCHES BETWEEN
NORMAL (STEREO/
MONO) and PRE/POST

MIDI JACKS
IN/THRU

EFFECT
BLOCK
SELECTOR

STEREO/
MONO
PRE/POST
OUT

BYPASS
STOMP

PRESET
SWITCH

POWER
INPUT
9v - 18v DC CENTER
PIN NEG ONLY

EXPRESSION
PEDAL INPUT

THE FIVE
CONTROLS
HINT: THE BLEND IS
EVERYTHING FOR
FLANGER & PHASER

STEREO/MONO
PRE/POST IN

TAP TEMPO
STOMP

(ALSO TOGGLES RAMP
FOR ROTARY)



DIMENSION

effect RATE; effect DEPTH; output VOLUME; clean BLEND; VARIABLE amount of bass

CHORUS

effect RATE; effect DEPTH; output VOLUME; clean BLEND; VARIABLE amount of bass

HARMONIC TREMOLO

speed/RATE; effect DEPTH; output VOLUME; BLEND = crossover point; VARIABLE = width

TREMOLO

effect RATE; effect DEPTH; output VOLUME; BLEND = stereo width, VARIABLE = waveform width

AUTO SWELL

effect RATE; effect DEPTH; output VOLUME; clean BLEND; VARIABLE pick attack speed

ROTARY

max horn speed RATE; max woofer speed DEPTH; output VOLUME, BLEND between horn/woofer, VARIABLE ramp speed.

U VIBE

effect RATE; filter range DEPTH; output VOLUME; clean BLEND; VARIABLE waveshape

PHASER

effect RATE; DEPTH of filter range, VARIABLE stereo width, clean BLEND; output VOLUME

FLANGER

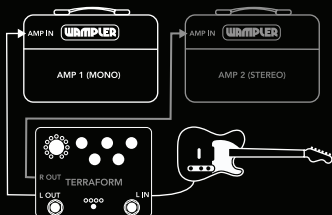
effect RATE; effect DEPTH (max=TZF); output VOLUME; clean BLEND; VARIABLE feedback level

ENVELOPE FILTER

attack speed/RATE; DEPTH envelope sensitivity; output VOLUME, clean BLEND; VARIABLE changes "Q"

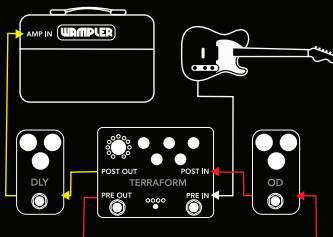
AWTAWAH

autowah RATE; filter DEPTH; output VOLUME; clean BLEND, VARIABLE changes "Q"



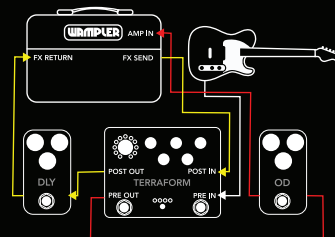
STEREO / MONO

FOR REGULAR STEREO / MONO USE
SET TOP SWITCH TO **NORMAL**
(out left for mono - use the right output as
well for stereo)



PRE / POST - STRAIGHT IN

FOR PRE / POST USE, STRAIGHT IN
SET TOP SWITCH TO **PRE/POST**



PRE / POST - EFFECTS LOOP

FOR PRE / POST USE, WITH EFFECTS LOOP
SET TOP SWITCH TO **PRE/POST**

PRESET - Set your tone, HOLD the PRESET button until it flashes, select the patch location with the PRESET button, and the hold it down again to store your tone in that location.

EXPRESSION - Hold down the bypass button and press TAP TEMPO, release both. Set the HEEL position of the control, press TAP TEMPO, set the TOE position of the control, press the TAP TEMPO stomp to exit.

PRE/POST - On power up, hold both the BYPASS and TAP TEMPO stomps and power up. Set each effect by selecting it and pressing BYPASS for pre (LED = green), or TAP TEMPO for post (LED = Blue), press the PRESET button to save your preferences.

POWER

This pedal was designed around the usage of a 9v power source. To avoid damage to the pedal, do **NOT** exceed 18vDC, do not use center pin positive adapters and do not use AC power. Using an incorrect power adapter can lead to damage and will void the warranty on the pedal. This pedal draws approximately **107mA** at 9vDC and **108mA** at 18vDC

WAMPLER[®]

TERRAFORM

FOR FURTHER DETAILS ON HOW TO UTILIZE THE
ADVANCED FEATURES OF YOUR TERRAFORM
VISIT: **WWW.WAMPLERPEDALS.COM**, VISIT THE
DOWNLOAD SECTION AND GET THE FULL MANUAL